

# MC1448, MC1848, MC2148 Service Parts

This part list contains the service parts for the air cooled, water cooled and remote air cooled MC1448, MC1848, MC2148 ice machines.

To avoid costly and time consuming errors, double check the model and voltage before ordering a part. The above have been manufactured in several voltages, which are designated by a voltage code after the hyphen (-) in the model number. Codes used included:

- 32 = 208-230/60/1
- 3 = 208-230/60/3
- 6 = 230/50/1
- 63 = 30/380-420/50/3

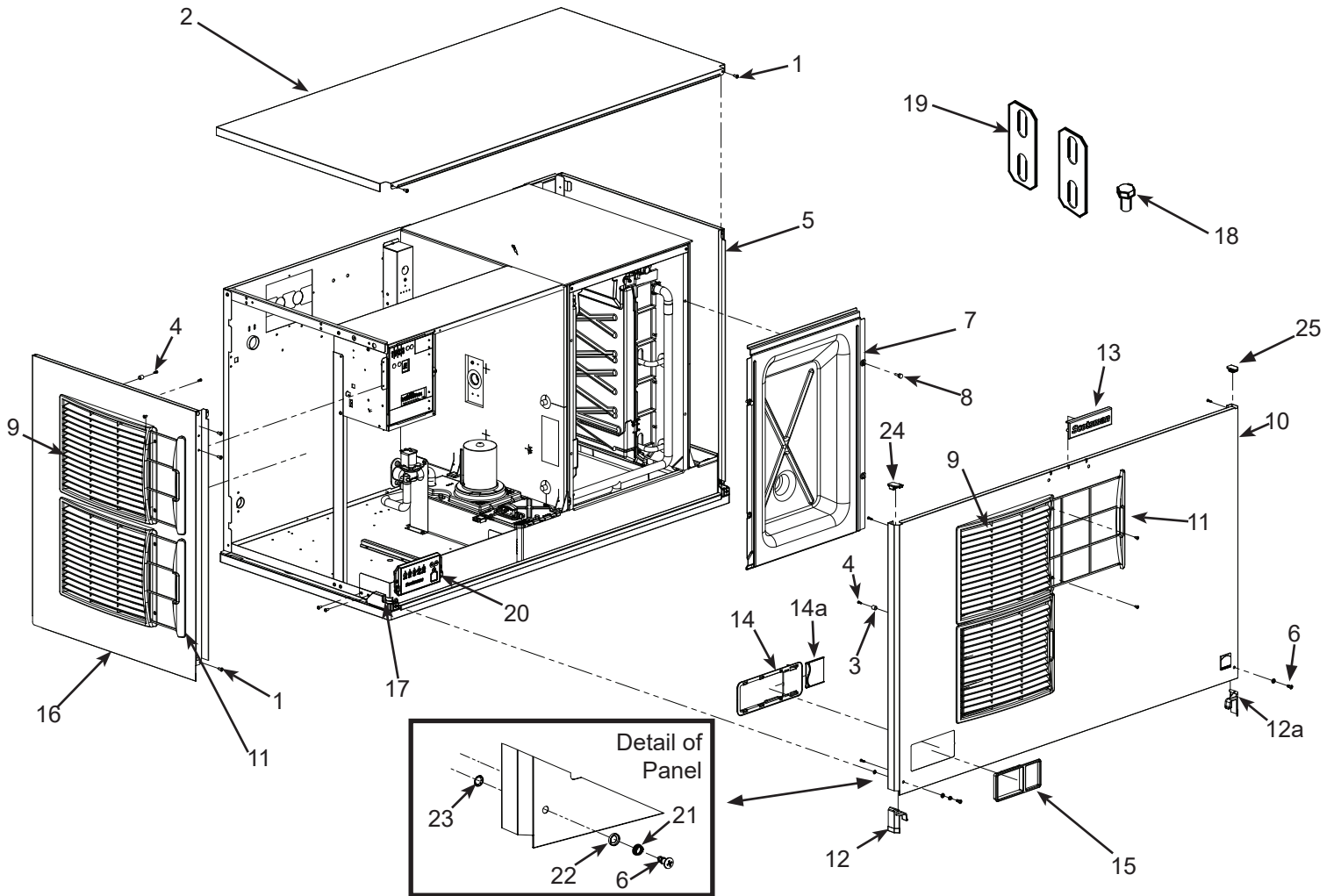
Note: These abbreviations are used in this list:

- AC = Air Cooled
- WC = Water Cooled
- RC = Remote Cooled
- HGV = Hot Gas Valve
- TXV = Thermostatic Expansion Valve
- Volt = Voltage
- Sol Vlv = Solenoid Valve
- Hdwe = Hardware

## Contents

Cabinet .....	Page 2
Interior Parts .....	Page 3
Evaporator Compartment .....	Page 4
Air Cooled Refrigeration System .....	Page 5
Air Cooled Fan Area .....	Page 6
Water Cooled Refrigeration .....	Page 7
Remote Refrigeration System .....	Page 8
Electrical and Control Box, -3, -6, -32 .....	Page 9
MC2148 Unique Electrical, -3, -32 .....	Page 10
Compressors .....	Page 11
Remote Condenser, ERC311 and ERC611 .....	Page 12
Wiring Diagram, MC2148R-32 .....	Page 13
Schematic Diagram, MC2148R-32 .....	Page 14
Wiring Diagram, MC2148R-3 .....	Page 15
Schematic Diagram, MC2148R-3 .....	Page 16

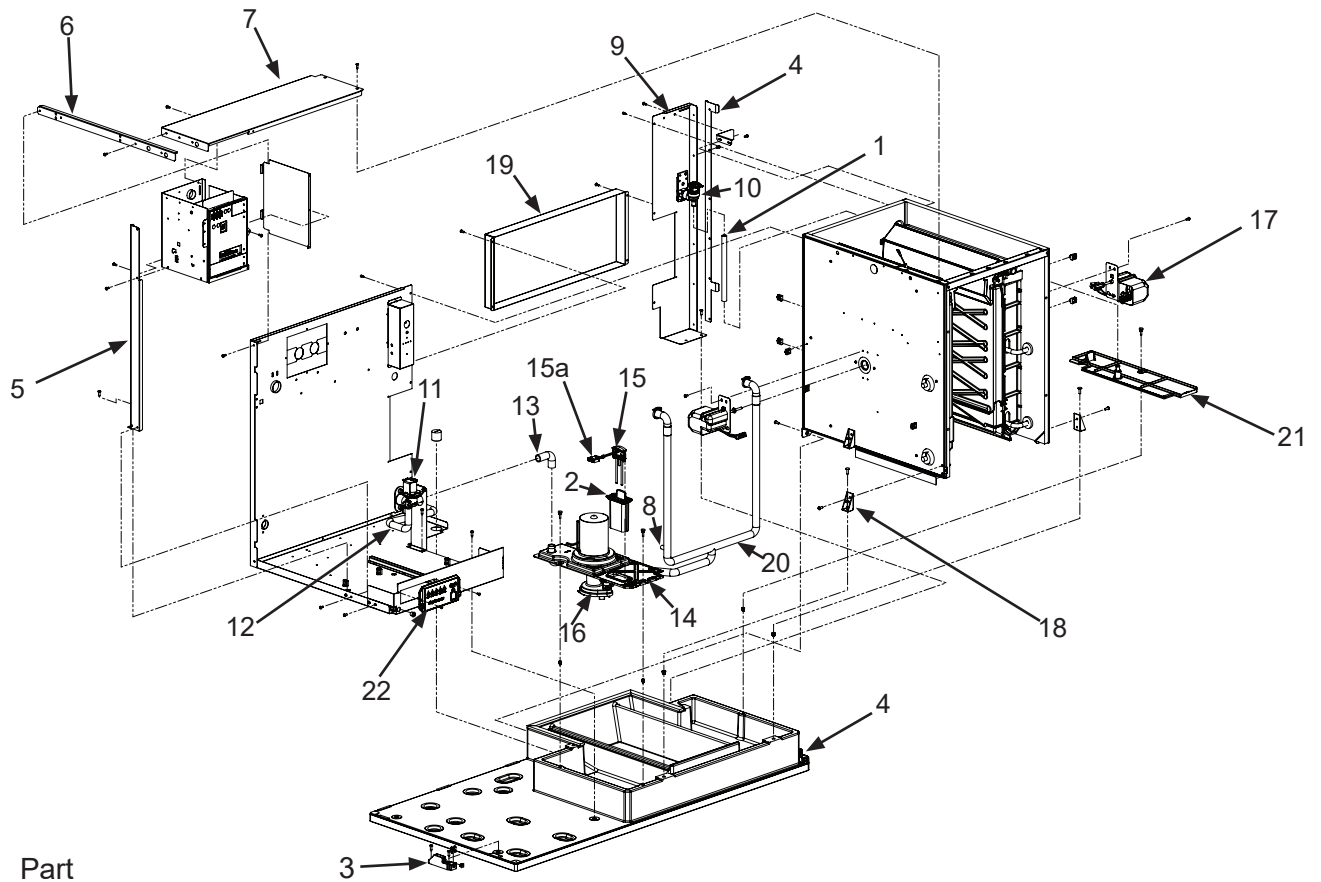
# MC1448, MC1848, MC2148 Service Parts Cabinet



Item Number	Part Number	Description	Item Number	Part Number	Description
1	03-1404-10	Screw	12a	02-5141-02	Bottom right corner
2	A41142-023	Top panel	13	02-5154-01	Emblem
3	02-4824-01	Spacer	14	02-5142-02	Bezel
4	03-3836-02	Screw	14a	02-5143-01	Bezel door
5	A41144-022	Right side panel	15	02-5142-01	Bezel, outer side
6	03-3838-02	Screw	16	A41143-026	Left side panel, AC with louvers
7	02-4184-01	Inner front panel		A41143-024	Left side panel WC, RC
8	03-0727-05	Thumbscrew	17	03-1733-04	Ball stud Receptacle
9	02-4224-03	Louvers	18	03-1405-15	Screw
10	A41141-028	AC Front panel assembly, includes filters, gussets and labels.	19	A30911-015	Machine straps
	A41141-029	WC, or RC front panel assembly, gussets and labels	20	11-0642-21	Light & switch panel
11	02-4212-03	Filters	21	03-1731-03	Spring
12	02-5141-01	Bottom left corner	22	03-1731-04	Cupped washer
			23	03-1731-02	Push on retainer
			24	02-5140-01	Top left corner
			25	02-5140-02	Top right corner

# MC1448, MC1848, MC2148 Service Parts

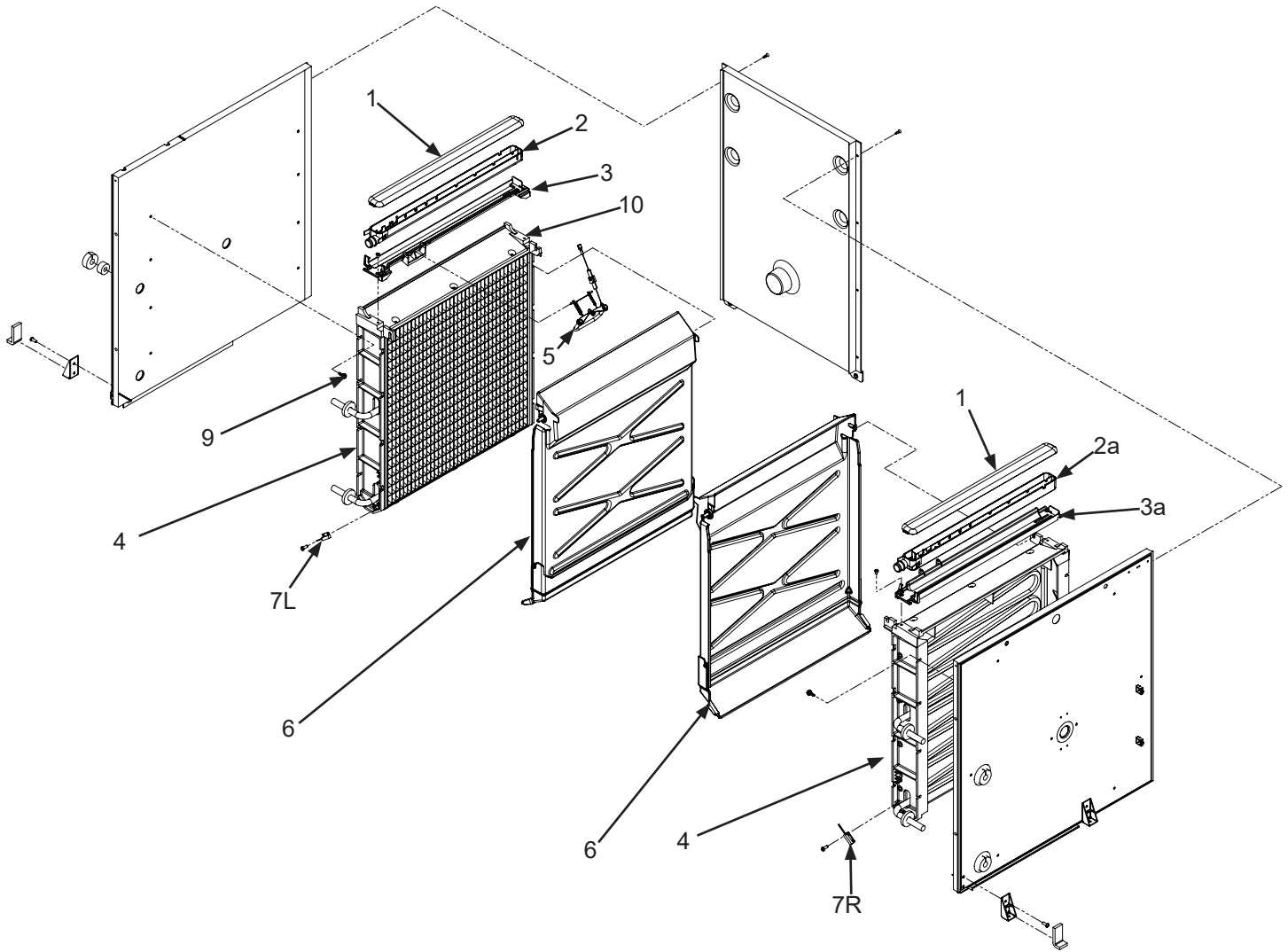
## Interior Parts



Item Number	Part Number	Description	15a		
				12-3185-04	WLS harness
1	13-0674-02	Fill hose order by ft (18")	16	12-2920-22	Water pump - 60 Hz
	15-0821-01	Fill hose, -6 CE models		12-2920-26	Water pump - 50 Hz
2	02-4646-01	WLS guard	17	12-3060-22	Harvest assist solenoid
3	02-5151-21	Left panel mount	18	02-4152-01	Gusset
4	02-5151-22	Right panel mount	19	A38681-001	Chase cover
5	A38629-001	Strut	20	02-4182-01	Pump hose
6	A40282-001	Channel	21	02-4175-01	Rt side res cover
7	A40387-001	Control box top	22	11-0642-21	Lower switch panel w/ harness
8	11-0572-21	Temp probe assy			
9	A39588-001	Right back panel			
10	12-3124-02	Inlet water sol vlv, 230 volt			
	12-2912-01	Water valve rebuild kit			
10a	11-0568-02	Inlet water sol vlv, CE mod			
11	11-0564-02	Purge valve, 230 volt			
12	A38862-002	Drain tube out			
13	A38862-001	Drain hose to valve			
14	02-4649-01	Water pump bracket			
15	A41192-021	Water level sensor			

# MC1448, MC1848, MC2148 Service Parts

## Evaporator Compartment



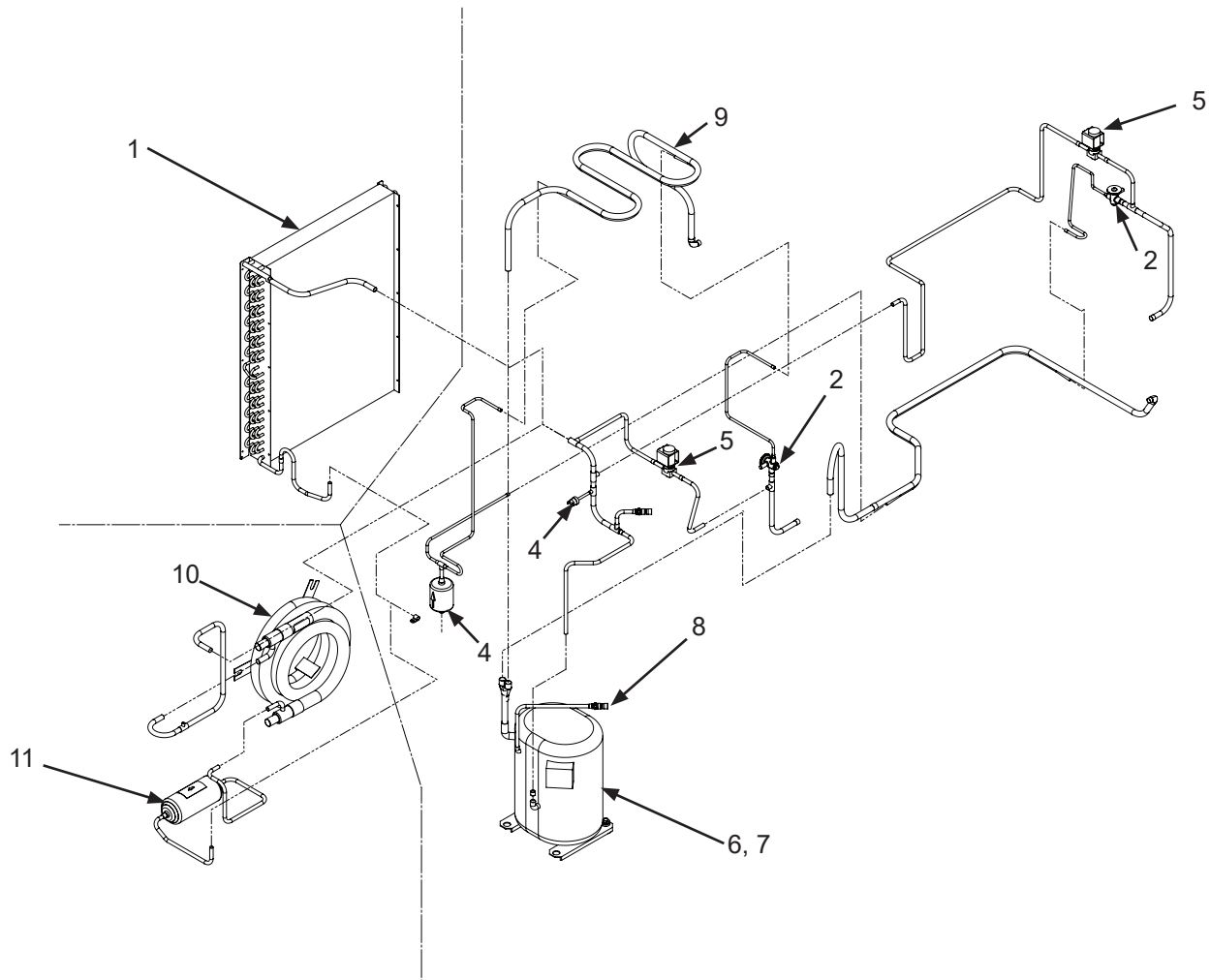
Item Number	Part Number	Description	Item Number	Part Number	Description
1	02-4065-01	Water distributor cover	5	A41191-021	Ice thickness sensor
2	02-4064-01	Water distributor, left	6	02-4611-21	Curtain
2a	02-4064-02	Water distributor, right	7L	11-0563-06	Curtain switch, left
3	02-4205-01	Mounting bracket, left	7R	11-0563-03	Curtain switch, right
3a	02-4205-02	Mounting bracket, right	8	11-0563-02	Curtain switch magnet*
4	see table	Evaporator	9	03-3868-01	Screw
			10	02-4156-21	Spillway replacement kit

\* Magnet included in replacement curtain 02-4611-21

	small cube	medium cube
Right	A38628-023	A38628-024
Left	A38628-021	A38628-022

# MC1448, MC1848, MC2148 Service Parts

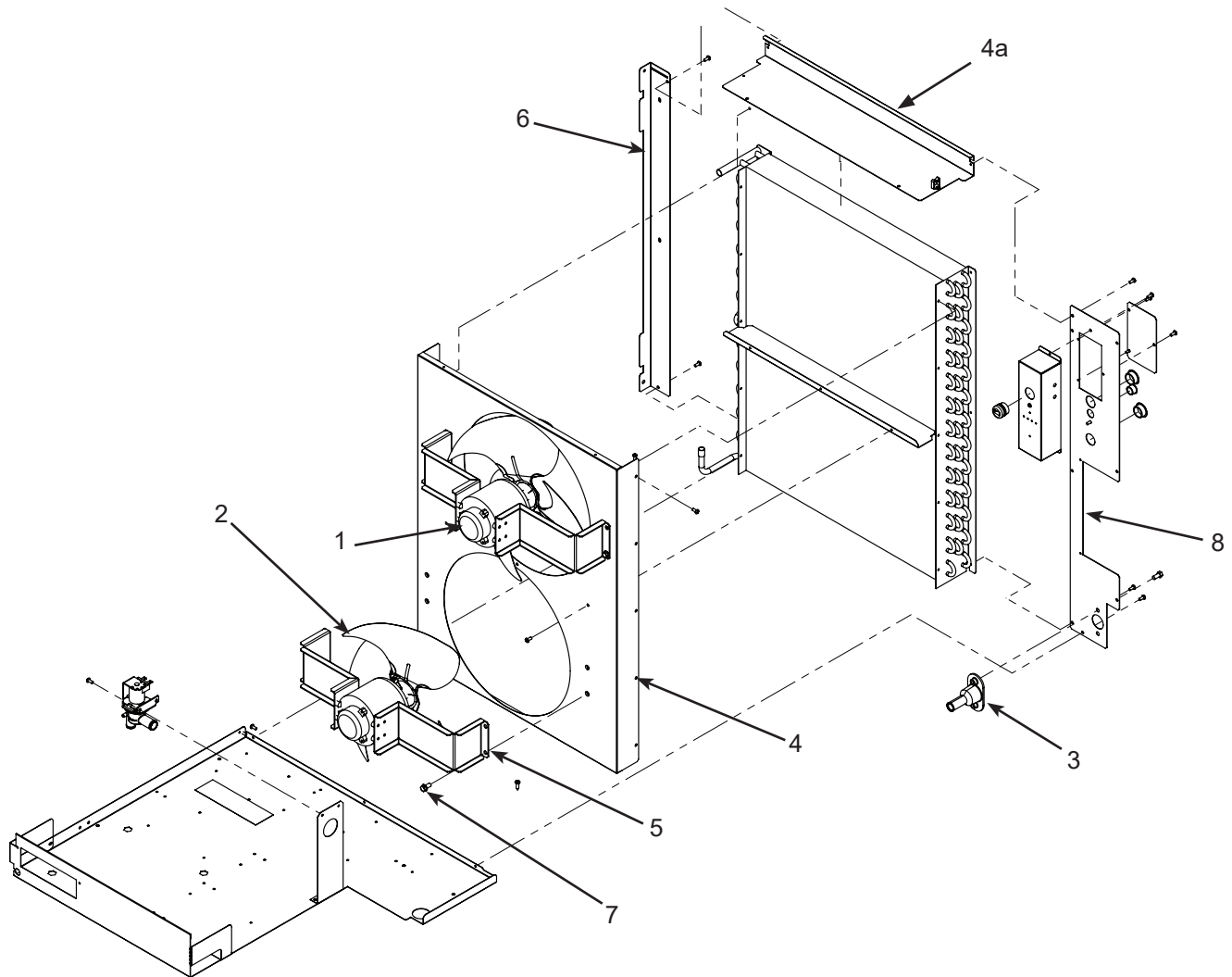
## Air Cooled Refrigeration System



Item Number	Part Number	Description	Alternate Access Valve, use began 4/08		
1	18-8892-01	Condenser, AC	8	16-1137-01	Valve body
2	16-1130-01	TXV	8a	16-1139-01	Core
	19-0599-06	Insulation Danfoss TXV	8b	16-1140-01	Cap
3	11-0566-22	Fan cycle pressure sw. AC	9	A38736-001	Left suction line heat ex
	11-0501-02	High pres cut out WC only	10	18-8865-01	Water cooled condenser
4	02-3319-02	Dryer	11	02-2628-02	Receiver, WC only
5	11-0493-01	Hot gas valve, 230 volt			
	12-2719-22	230 volt coil			
	12-2733-30	HGV rebuild kit			
6	see page 10	Compressors			
7	see page 10	Compressor mounting hdw			

# MC1448, MC1848, MC2148 Service Parts

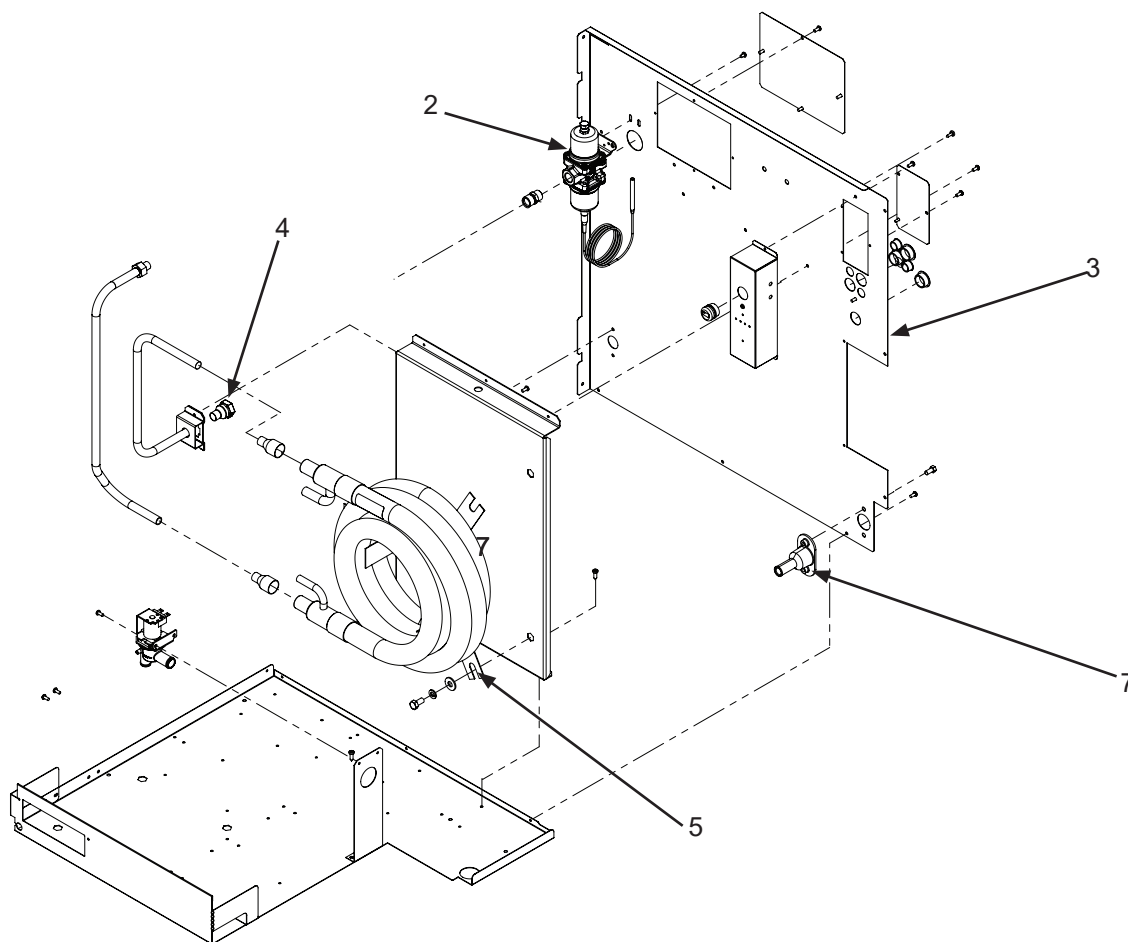
## Air Cooled Fan Area



Item Number	Part Number	Description
1	18-8927-01	Fan motor All but MC1848-32
1a	18-8927-03	MC1848-32 Fan motor
2	18-8882-01	Fan blade
3	02-3692-21	Drain adapter - also for WC and RC
4	A39630-001	Fan shroud
4a	A39631-001	Fan shroud top
5	A38554-001	Fan motor bracket
6	A39590-001	AC bracket
7	03-1645-01	Screw
8	A38797-001	Back panel, AC only

# MC1448, MC1848, MC2148 Service Parts

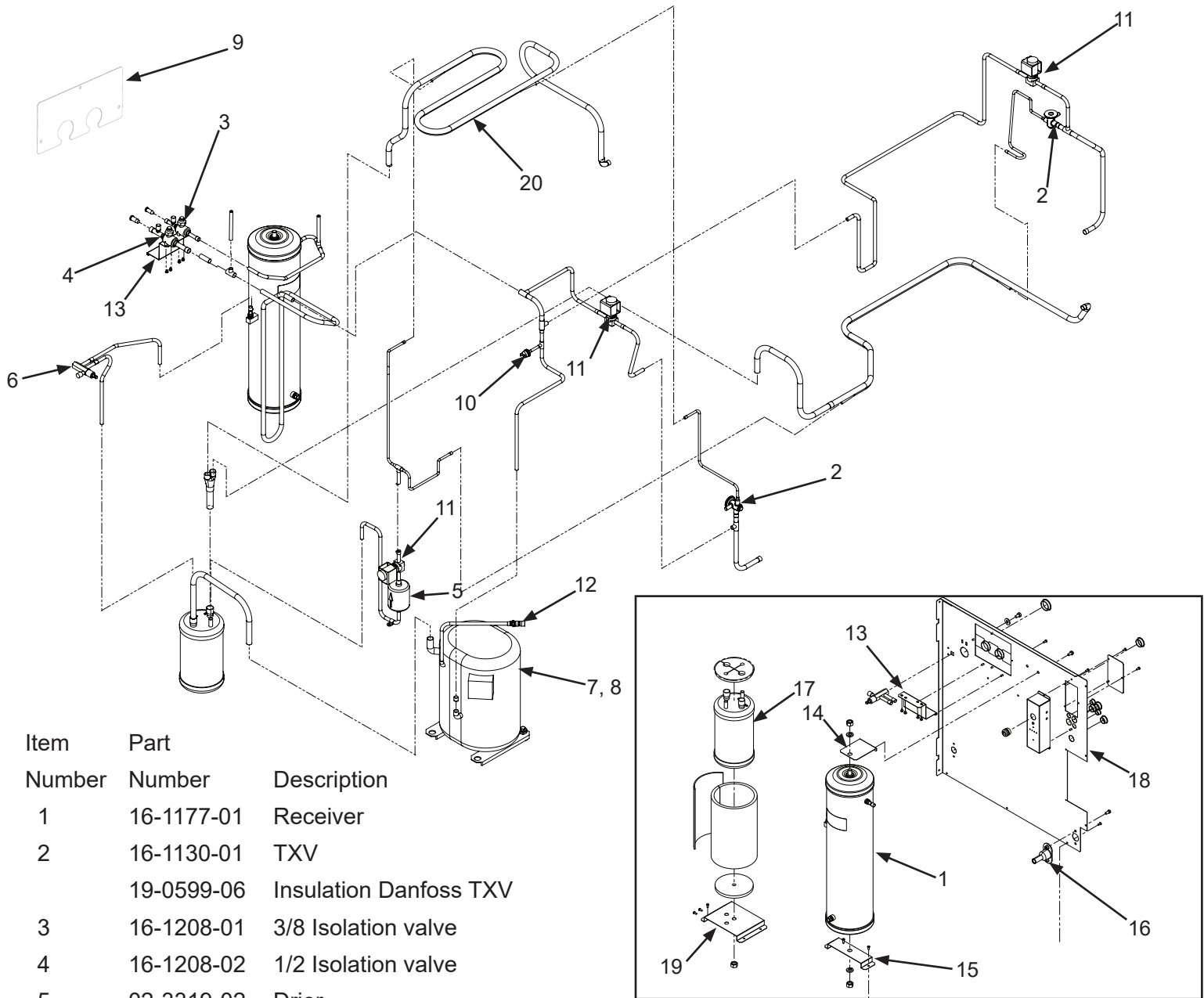
## Water Cooled Refrigeration



Item Number	Part Number	Description
1	18-8865-01	Condenser, WC MC1448, 1848
	18-8931-21	Condenser, WC MC2148
2	11-0608-21	Water regulating valve, MC1448W, MC1848W
	11-0478-02	Water regulating valve 2148W
3	A40629-001	Back panel, WC -
4	16-1154-01	Drain Adapter
4a	A39550-001	Brkt for 5
5	02-3692-01	Drain adapter

# MC1448, MC1848, MC2148 Service Parts

## Remote Refrigeration System

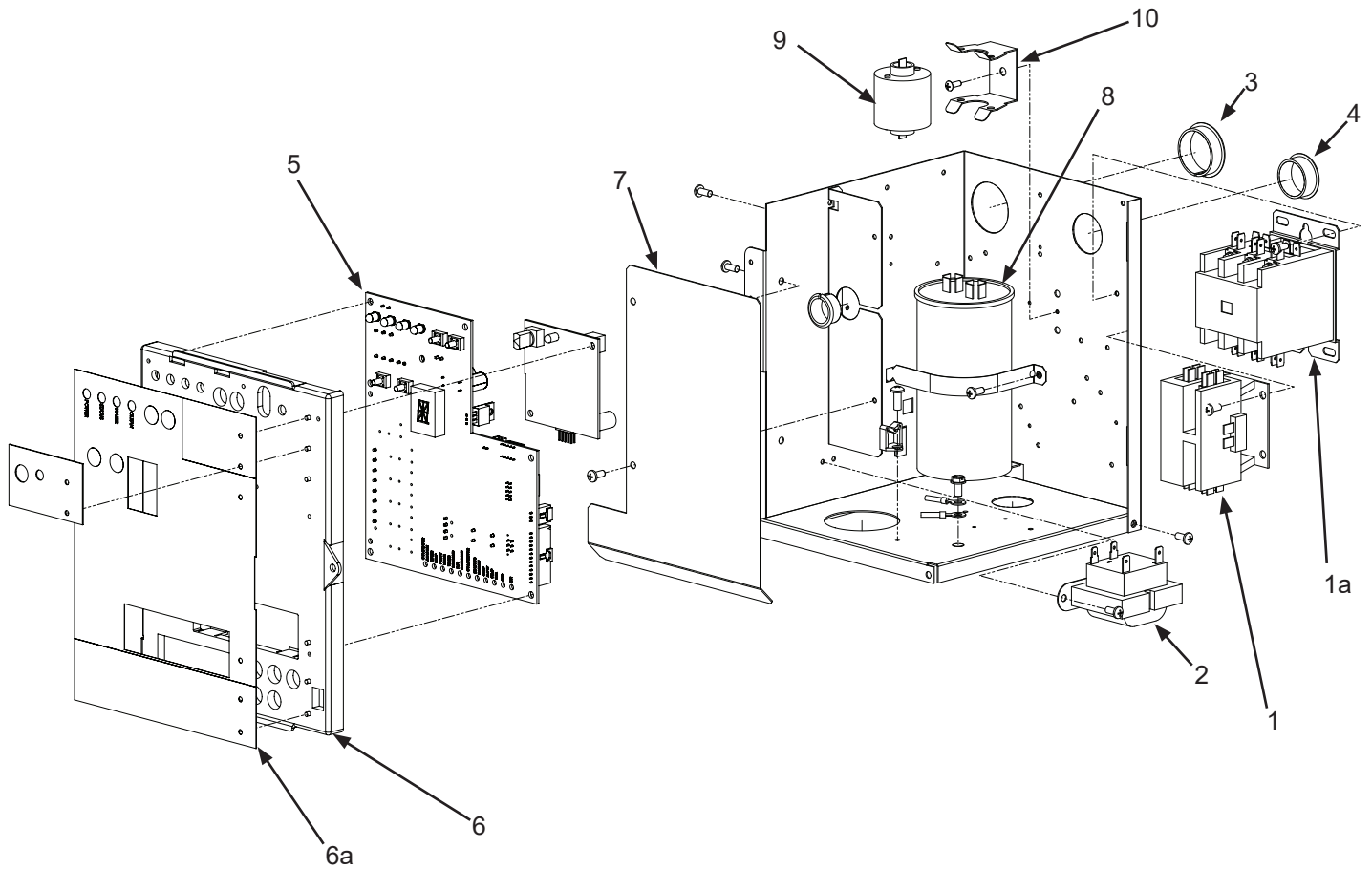


Item Number	Part Number	Description
1	16-1177-01	Receiver
2	16-1130-01	TXV
	19-0599-06	Insulation Danfoss TXV
3	16-1208-01	3/8 Isolation valve
4	16-1208-02	1/2 Isolation valve
5	02-3319-02	Drier
6	16-1030-01	Liquid line access valve
7	see page 10	Compressors
8	see page 10	Compressor mounting hdw
8a	see page 10	Crankcase heater
9	A40508-001	Fittings cover rem
10	11-0501-22	High pressure cut out
11	11-0493-01	Liquid line valve or HGV, 230 v
12	16-1137-01	Valve body
	16-1139-01	Core
	16-1140-01	Cap
13	A40507-001	Isolation valve bracket
14	A37211-001	Top receiver bracket
15	A37212-001	Bottom receiver bracket
16	02-3692-21	Drain adapter
17	16-1122-21	Accumulator, kit w/insul
18	A40629-001	Back panel, rem
19	A37948-001	Accumulator bracket
20	A40892-001	Heat X, left



# MC1448, MC1848, MC2148 Service Parts

## Electrical and Control Box, -3, -6, -32



Item Number	Part Number	Description
1	12-2469-02	Contactora, 230, single ph
1a	12-2533-02	Contactora, three phase
2	12-2924-02	Transformer, 230 volt
2a	12-2639-01	Transformer, 50 Hz
3	12-1213-20	Snap bushing
4	12-1213-15	Snap bushing
5	11-0640-21	Service controller
6	02-4076-01	Control box door
6a	02-4189-01	Overlay label
7	A39216-001	Barrier
8	see next page	Run capacitor
9	see next page	PTCR -
10	18-8840-02	Bracket

### Wiring Harnesses (not illustrated)

Power harness connects to J1 on controller (4 pin)

12-2931-01 Power harness, A & W

12-2931-02 Power harness, Remote

Hi voltage harness has the 8 pin connector

12-2937-01 1448,1848 Hi voltage harness A & W

12-2938-01 1448,1848 Hi voltage harness Rem

12-3066-02 1448,1848 Hi voltage, 50 Hz A & W

12-3067-02 1448, 1848 Hi voltage, 50 Hz, Rem

12-3185-04 Water level sensor harness

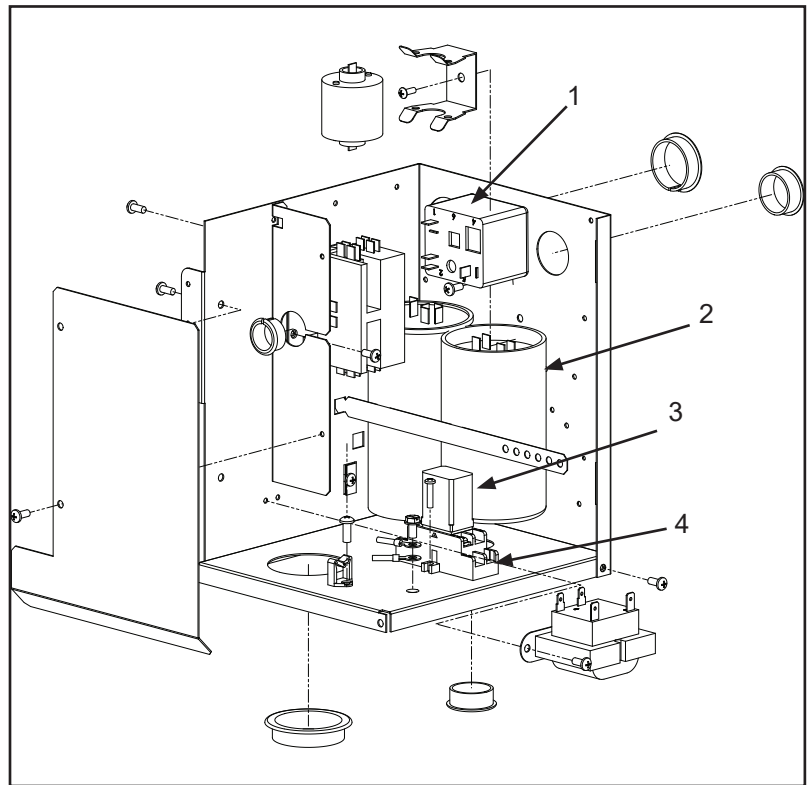
for the 3 probe sensor.

11-0642-21 Lower switch panel w/ harness

# MC1448, MC1848, MC2148 Service Parts

## MC2148 Unique Electrical, -3, -32

Item Number	Part Number	Description
MC2148R-32		
1	18-1903-62	Start relay
2	18-1901-27	Start capacitor
MC2148R-3 and MC2148R-32		
3	12-2949-03	Fan Relay
4	12-2949-02	Relay Base
MC2148R		
12-3140-01	2148 Hi voltage harness	



# MC1448, MC1848, MC2148 Service Parts Compressors

Model	Series	Electrical	Compressor	Run Capacitor	PTCR/Relay
MC1448-32		208-230/60/1	18-8749-22	18-1902-70	18-8840-01
MC1448-3		208-230/60/3	18-8749-24	-	-
MC1848-32-AC		208-230/60/1	18-8750-22	18-1902-70	18-8840-01
MC1848-32-WC,RC		208-230/60/1	18-8751-23	18-1902-71	18-8840-01
MC1848-3		208-230/60/3	18-8751-25	-	-
MC2148-32 - RC		208-230/60/1	18-8930-24	18-1902-27	18-1903-62
MC2148-3 - RC		208-230/60/3	18-8930-25	-	-

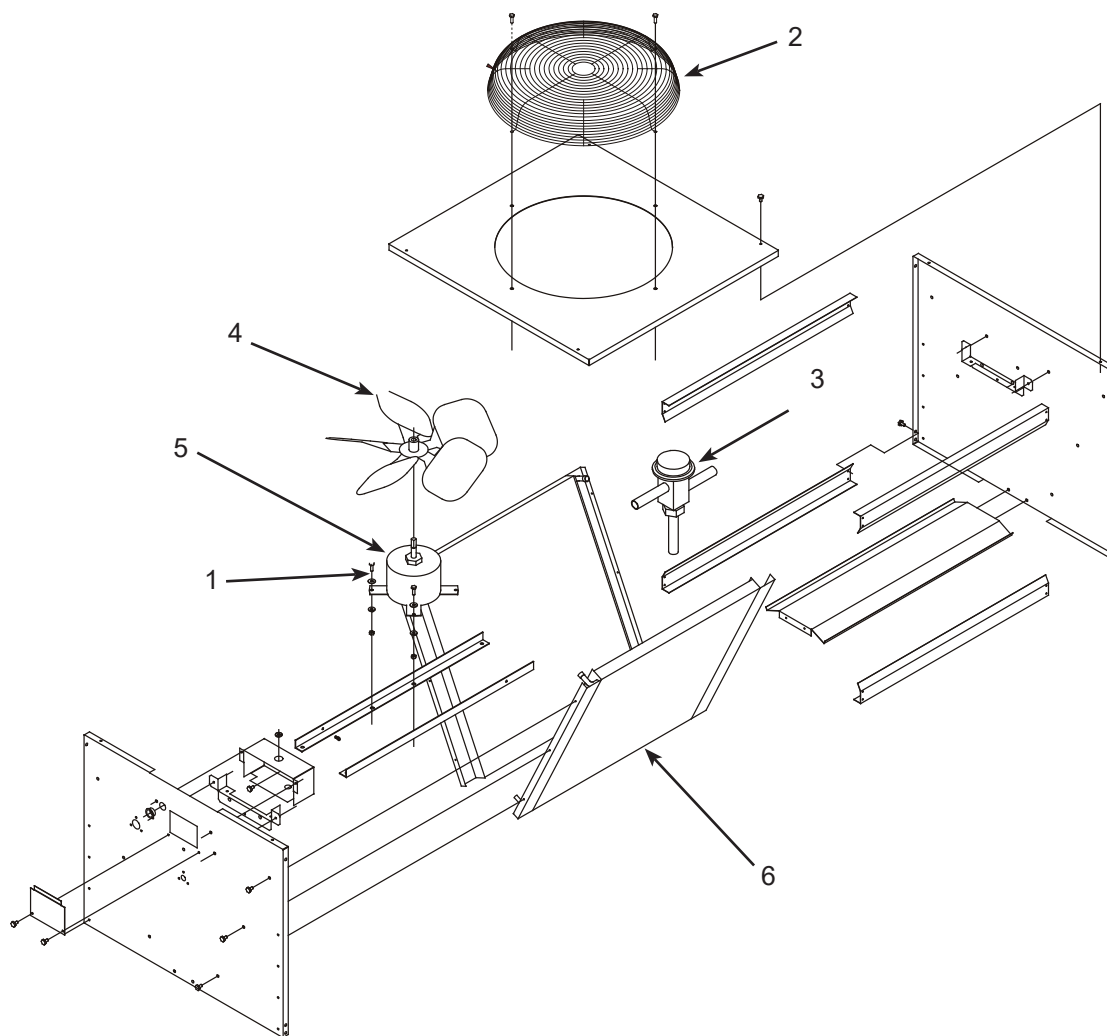
Model	Bolt	Washer	Grommet	Sleeve
MC1448, MC1848	03-1420-20	03-1407-07	18-2300-27	18-2300-26
MC2148	03-1405-20	03-1407-07	18-2300-27	18-2300-26

Model	Internal crankcase heater*	External crankcase heater*
MC1448R, MC1848R, MC2148R	18-2308-01	12-3043-03

\* Included with replacement compressor (\*\*Except the 18-8749-18 the 18-8749-18 only comes with the compressor.

# MC1448, MC1848, MC2148 Service Parts

## Remote Condenser, ERC311 and ERC611



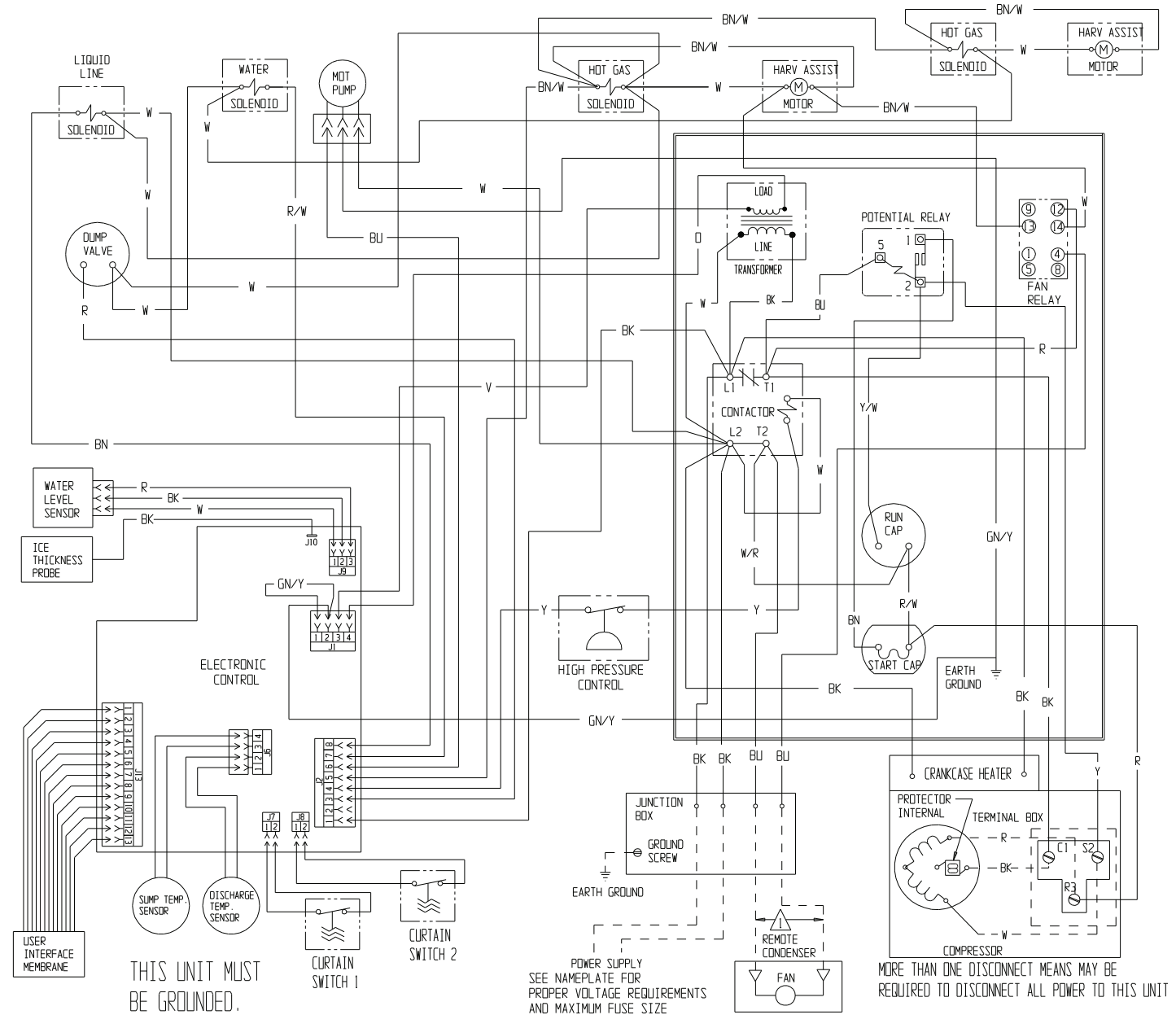
Item Number	Part Number	Description	Not Shown:	
1	03-1405-08	Screw	A37169-001	Leg
2	02-3575-01	Fan guard	A37170-001	Leg brace - ECR311
3	11-0422-22	Headmaster	A37296-001	Leg brace - ERC611
4	18-8816-01	Fan blade - ERC311	03-1645-01	Screw for legs
	18-8820-01	Fan blade - ERC611	16-1100-08	Quick connect w/ stub for 3/8 inch line set tube
5	12-2651-01	Fan motor - ERC311	16-1100-09	Quick connect w/ stub for 1/2 inch line set tube
	12-2717-01	Fan motor - ERC611		
6	18-8827-01	Coil, ERC311		
	18-8819-01	Coil, ERC611		

# MC1448, MC1848, MC2148 Service Parts

## Wiring Diagram, MC2148R-32

17-3795-01

USE COPPER CONDUCTORS ONLY



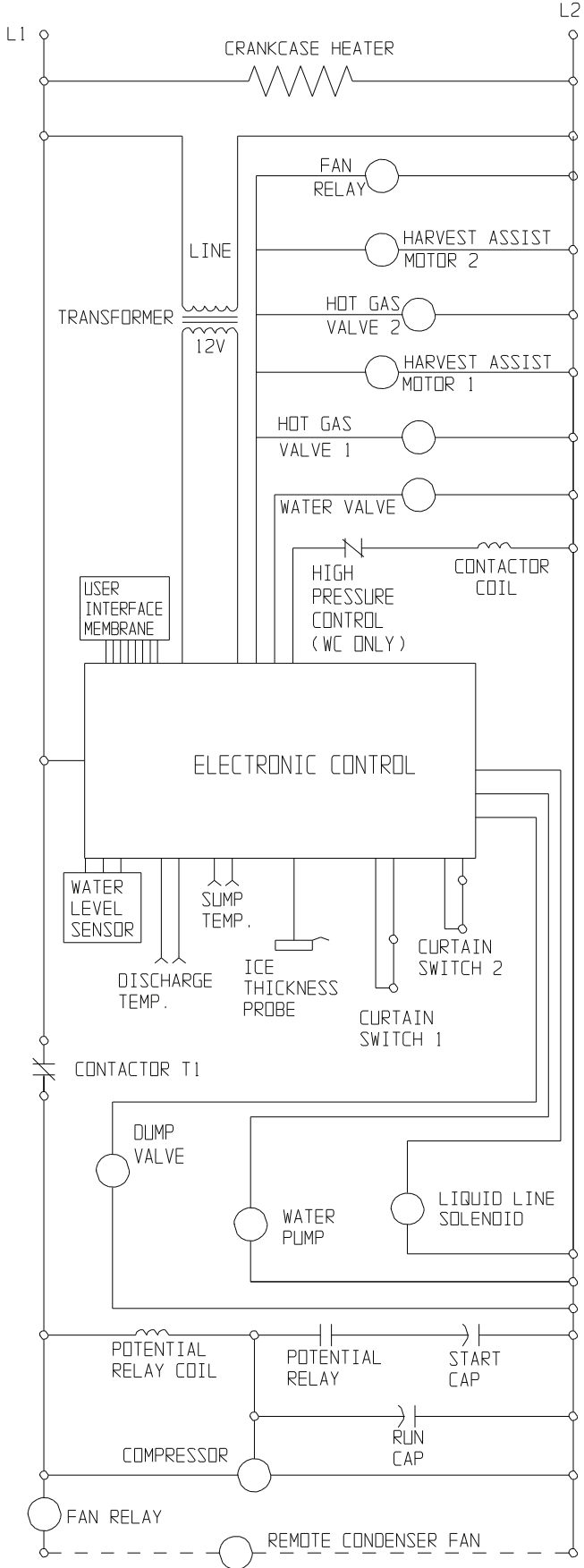
THIS UNIT MUST BE GROUNDED.

▲ DASHED LINES INDICATE FIELD WIRING WHICH MUST BE INSTALLED IN ACCORDANCE WITH THE NATIONAL ELECTRICAL CODE AND ALL STATE AND LOCAL CODES.

POWER SUPPLY SEE NAMEPLATE FOR PROPER VOLTAGE REQUIREMENTS AND MAXIMUM FUSE SIZE

MORE THAN ONE DISCONNECT MEANS MAY BE REQUIRED TO DISCONNECT ALL POWER TO THIS UNIT

# MC1448, MC1848, MC2148 Service Parts Schematic Diagram, MC2148R-32

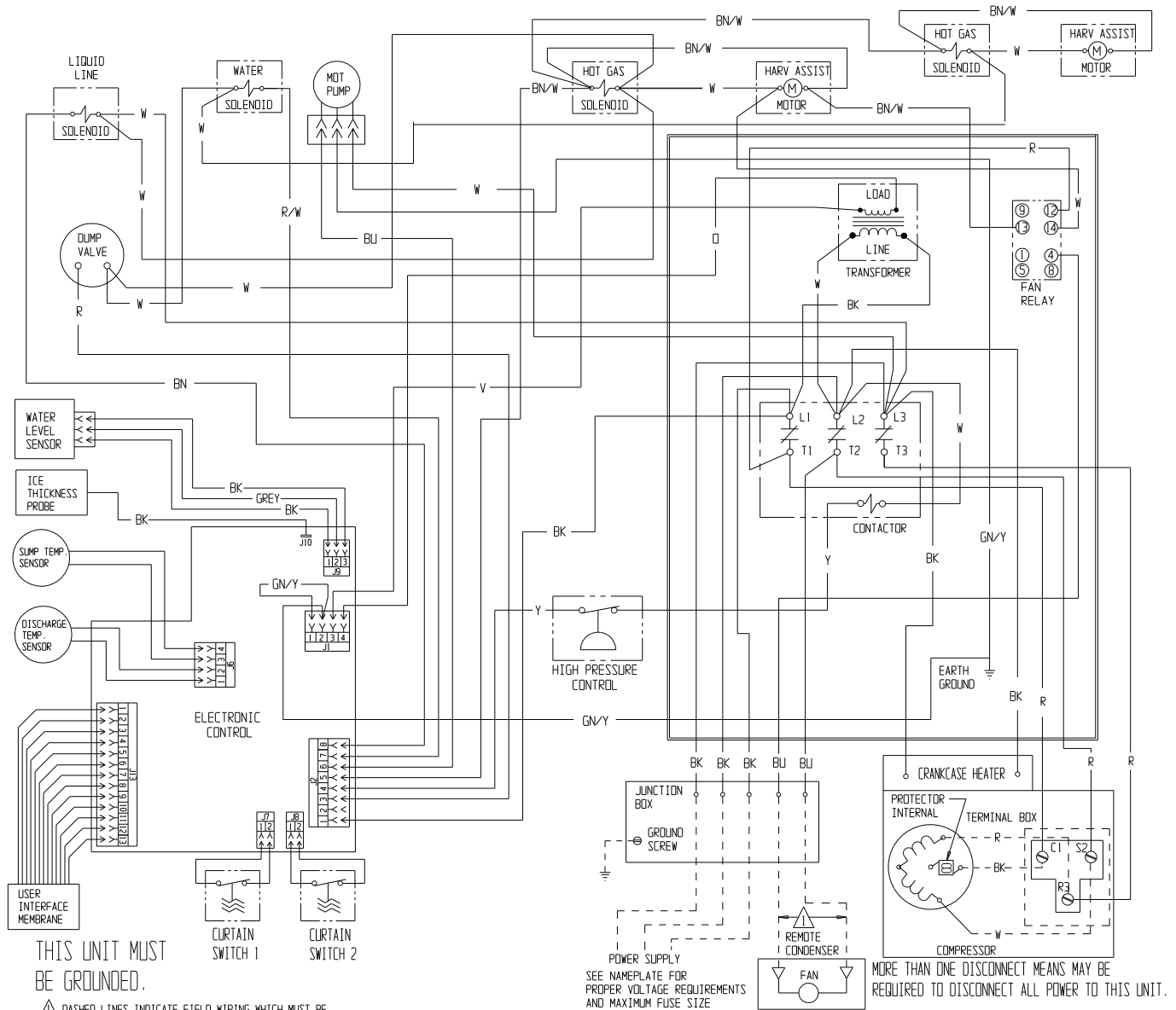


# MC1448, MC1848, MC2148 Service Parts

## Wiring Diagram, MC2148R-3

17-3774-01

USE COPPER CONDUCTORS ONLY



THIS UNIT MUST BE GROUNDED.

△ DASHED LINES INDICATE FIELD WIRING WHICH MUST BE INSTALLED IN ACCORDANCE WITH THE NATIONAL ELECTRICAL CODE AND ALL STATE AND LOCAL CODES.

POWER SUPPLY  
SEE NAMEPLATE FOR  
PROPER VOLTAGE REQUIREMENTS  
AND MAXIMUM FUSE SIZE

MORE THAN ONE DISCONNECT MEANS MAY BE REQUIRED TO DISCONNECT ALL POWER TO THIS UNIT.

# MC1448, MC1848, MC2148 Service Parts

## Schematic Diagram, MC2148R-3

